

THIS INSTRUMENT PREPARED BY  
 DAVID P. LINDLEY  
 OF  
**CAULFIELD and WHEELER, INC.**  
 SURVEYORS - ENGINEERS - PLANNERS  
 7900 GLADES ROAD, SUITE 100  
 BOCA RATON, FLORIDA 33434 - (561)392-1991  
 CERTIFICATE OF AUTHORIZATION NO. LB 3591

# EVERGLADES POLO

A PORTION OF THE SOUTHWEST 1/4 OF SECTION 33, TOWNSHIP 44 SOUTH, RANGE 41 EAST,  
 VILLAGE OF WELLINGTON, PALM BEACH COUNTY, FLORIDA

## EASEMENT DETAILS

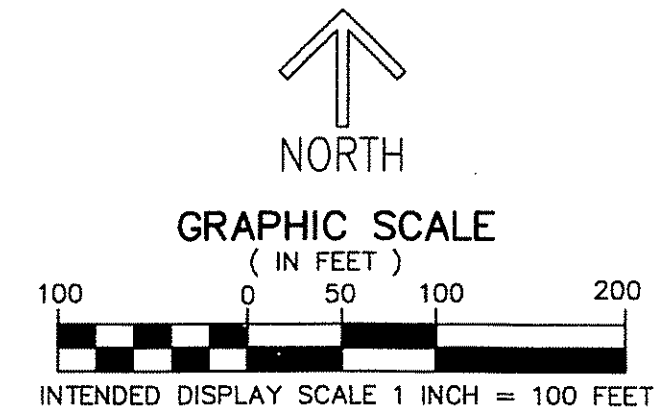
162

STATE OF FLORIDA  
 COUNTY OF PALM BEACH  
 THIS PLAT WAS FILED FOR  
 RECORD AT \_\_\_\_\_ M.  
 THIS \_\_\_\_\_ DAY OF \_\_\_\_\_  
 A.D. 201\_\_ AND DULY RECORDED  
 IN PLAT BOOK \_\_\_\_\_ ON  
 PAGES \_\_\_\_\_ AND \_\_\_\_\_

SHARON R. BOCK  
 CLERK AND COMPTROLLER

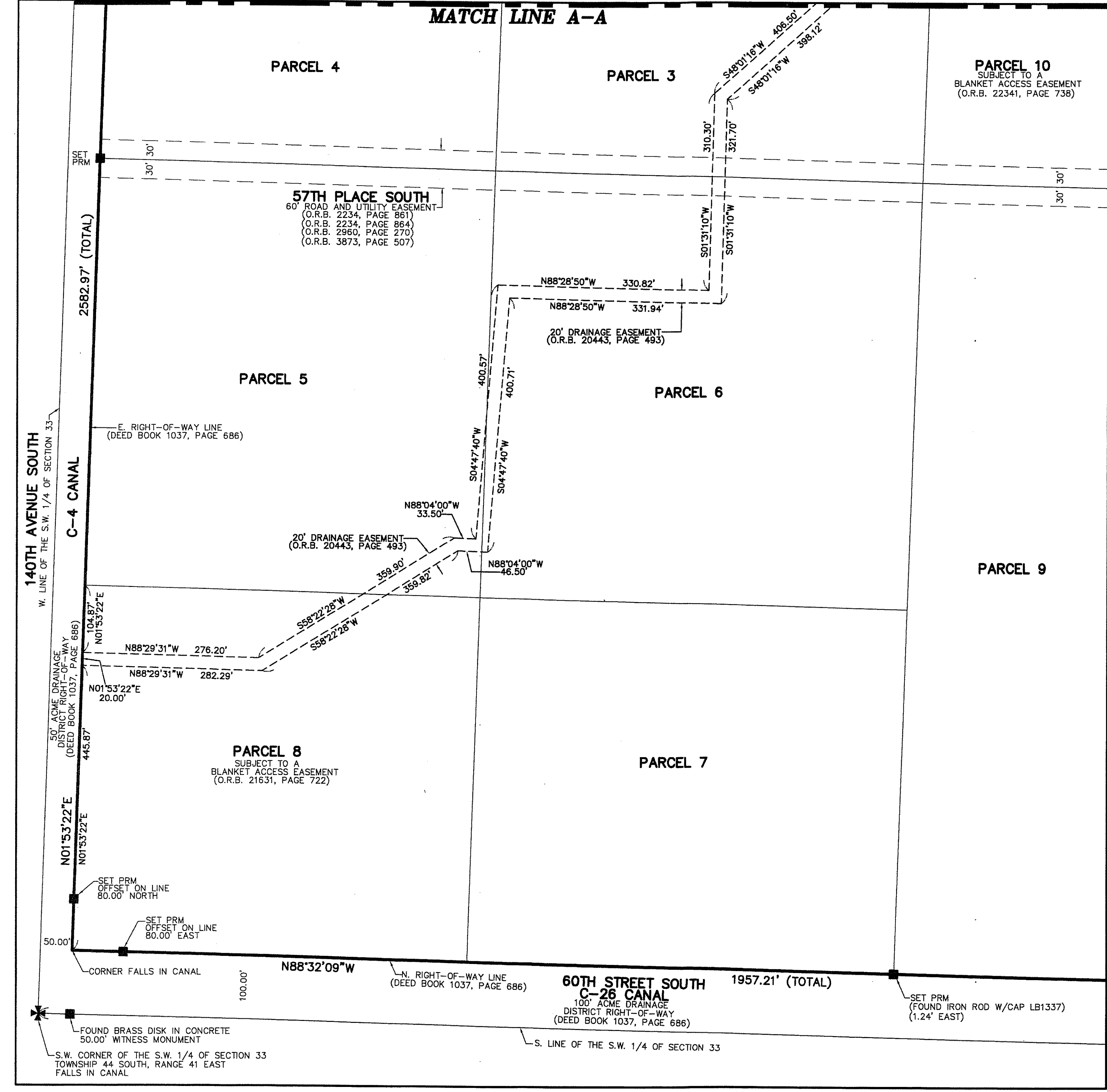
BY: \_\_\_\_\_  
 DEPUTY CLERK

SHEET 5 OF 25



- LEGEND/ABBREVIATIONS**
- AC - ACRES
  - FPL - FLORIDA POWER & LIGHT CO.
  - LB - LICENSED BUSINESS
  - O.R.B. - OFFICIAL RECORD BOOK
  - SF - SQUARE FEET
  - Δ - DENOTES CENTRAL ANGLE
  - R - DENOTES RADIUS
  - L - DENOTES ARC LENGTH
  - PRM - DENOTES PERMANENT REFERENCE MONUMENT  
 4" x 4" x 24" CONCRETE MONUMENT WITH  
 ALUMINUM DISK STAMPED "C&W PRM LB3591"
  - - DENOTES PERMANENT REFERENCE MONUMENT  
 NAIL AND METAL DISK STAMPED "PRM LB3591"

### DRAINAGE EASEMENT DETAIL



### DRAINAGE EASEMENT DETAIL

